

# THEATRE WORKS

## THEATRE WORKS TECHNICAL SPECIFICATIONS JANUARY 2020

### ADDRESS

14 ACLAND ST, S<sup>T</sup> KILDA, VIC 3182

### PRODUCTION AND TECHNICAL MANAGERS:

JACINTA ANDERSON & JOHN COLLOPY

### PHONE:

03 9534 4879

### EMAIL:

[TECH@THEATREWORKS.ORG.AU](mailto:TECH@THEATREWORKS.ORG.AU)

### VENUE WEBSITE:

[WWW.THEATREWORKS.ORG.AU](http://WWW.THEATREWORKS.ORG.AU)

# **STAGE**

## **STAGE DESCRIPTION**

Unraked black box studio space with fixed lighting grid. Hardwood floor covered in hardwood sheets. Stage Crossover via dressing room.

### **STAGE DISTRIBUTED LOAD LIMIT**

500kg/m<sup>2</sup> (5kPa)

### **STAGE POINT LOAD LIMIT**

300kg (3kN) subject to venue approval

### **STAGE RAKE**

None

### **PROSCENIUM ARCH**

None

## **SEATING BANK**

144-seat retractable, automatic, Acromat seating bank.

**Please note** the seating bank is not centred in the space.

## **STAGE DIMENSIONS**

### **SETTING LINE**

Setting line is 1200mm upstage of the seating bank when fully extended.

### **DISTANCE FROM SETTING LINE**

SL to curtain track	<b>5621mm</b>
SL to seating bank	<b>-1200mm</b>
SL to rear wall	<b>9536mm</b>

### **HEIGHT**

Floor to grid	<b>6000mm</b>
---------------	---------------

Floor to curtain track 5000mm

### **WIDTH**

Total width of space 12,194mm

Centre Line to each wall 6097mm

### **LOADING DOCK**

Double door to carpark, with entrance off St Leonards Ave. Maximum truck size is 3-tonne, due to carpark access limitations.

### **DOOR DIMENSIONS**

2200mm high x 1600mm wide

### **RESTRICTIONS / OBSTRUCTIONS**

Trucks must park parallel to loading doors

### **ACCESS EQUIPMENT**

#### **ELEVATED WORK PLATFORM**

JLG 20MVL Motorized Elevated Work Platform

Maximum Platform Height is **5820mm**

Visiting technicians must be inducted prior to use. Please fill out logbook before use.

#### **LADDERS**

1x 1.8m stepladder

1x 3m A-Frame Branch Platform Ladder

1x 6m Extension Ladder

### **STAGING EQUIPMENT**

#### **DRAPES**

<b>TYPE</b>	<b>MATERIAL</b>	<b>COLOUR</b>	<b>WIDTH</b>	<b>HEIGHT</b>	<b>QTY</b>
Pleated	Wool	Black	4350mm	5000mm	6
Pleated	Wool	Black	3000mm	5000mm	2

Pleated	Wool	Black	1500mm	5000mm	2
Pleated (above exit door)	Wool	Black	2000mm	2400mm	1
Pleated (exit door cut out)	Wool	Black	2000mm	2700mm	1
Pleated	Wool	Black	4500mm	6000mm	2
Pleated	Wool	Black	1100mm	5000mm	1

## **ROSTRA**

Theatre Works does not own any rostra.

## **STAGING NOTES**

- **Screwing into the floor is permitted**, but any larger holes or modifications to venue infrastructure must be confirmed with Venue Management.
- **Painting of the floor is permitted** but it MUST be returned to black at the conclusion of the hire period. Theatre Works will provide the black stage paint and it MUST be used. This will be supplied at the hirer's expense.
- **Hirers must provide** their own tools, tape, paint, and hardware (screws, bolts, etc.)
- **Glitter; confetti; organic materials** such as dirt or sand are not to be brought into or used inside Theatre Works without prior permission from the Venue Manager.
- **Theatre Works cannot store** sets, props, or costumes outside of the hire period. All items brought into the venue by hirers must be removed at the conclusion of the hire period. Failure to do so will incur charges.

- **The use of naked flame or cigarettes** onstage is subject to approval from the Venue Manager. Risk Assessments will be required; and sets and props will need to be fire retarded.
- **Minimum 1200mm of clearance** must be maintained to the emergency exits at all times.
- **Handrails and Steps** must be installed on the seating bank whenever it is extended.
- **Set construction and painting** is not permitted in the foyer, dressing room, toilets, or within 2m of any doors.
- **Spray Painting is prohibited** in any indoor space.

## **LIGHTING**

### **LIGHTING GRID**

Fixed lighting grid of 48mm steel pipe. The grid is not suitable for circus or dynamic load rigging.

### **CONTROL**

#### **PRIMARY CONSOLE**

ETC EOS Nomad Software on PC

#### **CONTROL CHANNELS**

1024

#### **SIGNAL OUTPUT**

2x DMX universes through ETC Gadget II

#### **REMOTE CONTROL**

Yes, wireless via ETC aRFR app

#### **SECONDARY CONSOLE**

LSC Maxim L 48/96

**CONTROL CHANNELS**

96

**SIGNAL OUTPUT**

2x DMX Universes

**REMOTE CONTROL**

No

**DIMMERS**

**TOTAL DIMMERS**

48 @ 2.4kW per channel

**DIMMER LOCATION**

Bio box

**DIMMER SPECIFICATIONS**

2x Jands FPX 12 Channel rack

2x LSC Redback 12 Channel rack

**NOTES**

One dimmer channel must be reserved for House Lights

**POWER**

**3-PHASE**

4x 32A, 400V 3-phase outlets located in bio box

**240V 10A**

Limited 10A circuits available throughout the space

**HOUSE LIGHTS**

**INDEPENDENT CONTROL**

No

## **CONTROL POSITIONS**

Only through lighting console

## **FADE TIME ADJUSTABLE**

Yes

## **WORK LIGHTS**

LED Work Lights controllable from OP Dressing Room Door, Bio Box, and Foyer Entrance

LED Hi-Bays only controlled from Bio Box

## **STAGE LUMINAIRES**

### **PROFILES**

<b>MAKE</b>	<b>ANGLE</b>	<b>ACCESSORIES</b>	<b>WATTS</b>	<b>TOTAL</b>
ETC Source Four Jr Zoom	25-50°	12x M size Gobo Holders, 10x Iris	575w	<b>14</b>
Selecon Acclaim Axial Zoom	24-44°	6x M size Gobo Holders	600w	<b>7</b>

### **FRESNELS**

<b>MAKE</b>	<b>ANGLE</b>	<b>ACCESSORIES</b>	<b>WATTS</b>	<b>TOTAL</b>
Selecon Rama	7-56°	24x Barndoors	1200w	<b>24</b>
Selecon SF1200	8-50°	6x Barndoors	1200w	<b>9</b>
Strand Harmony F	8-55°	6x Barndoors	1000w	<b>8</b>

### **PEBBLE CONVEX**

<b>MAKE</b>	<b>ANGLE</b>	<b>ACCESSORIES</b>	<b>WATTS</b>	<b>TOTAL</b>
Prolite PC	10-50°	6x Barndoors	650w	<b>6</b>

### **PAR CANS**

<b>MAKE</b>	<b>ANGLE</b>	<b>ACCESSORIES</b>	<b>WATTS</b>	<b>TOTAL</b>
PAR 64	MFL		1000w	<b>6</b>
PAR 56	MFL		300w	<b>5</b>

## **HOUSE LIGHTS (NOT TO BE MOVED)**

<b>MAKE</b>	<b>ANGLE</b>	<b>NOTES</b>	<b>WATTS</b>	<b>TOTAL</b>
QI Flood	Flood	Focused on Seating Bank	150w	4
PAR 16 Birdie	36°	Aisle Lights	50w	5

## **LIGHTING ACCESSORIES**

<b>ITEM</b>	<b>MODEL</b>	<b>DETAIL/ACCESSORIES</b>	<b>TOTAL</b>
Boom Arms	Flat Steel	90° twist	6
Pipe	48mm OD	Various lengths 1m, 1.5m, 2m, 3m	Assorted
Floor Stands		Wooden and metal	9
Scaff Clamps		90deg Fixed	16
Scaff Clamps		Swivel	10

## **CABLING**

### **POWER**

Theatre Works has a good stock of 240V extension leads to accommodate the venue stock. If hiring in extra equipment, extra cable may be required.

### **DMX**

Theatre Works does not have any stock of DMX cable to supplement intelligent



lighting fixtures. All DMX cable will need to be hired in.

## **LIGHTING NOTES**

- **Unused or excess stage lights** must be stored in lighting storage area – see LX Appendix.
- **Every light has its own accessory.** It is the hirer's responsibility to ensure that accessories are kept with the lamps. Any missing accessories will be charged to the hirer. Accessories include, Barndoors, Colour Frames, Hook Clamp, Safety Chain, Lamp, Gobo Holder, Iris.
- **Theatre Works does not maintain a standard rig** and all lights and equipment must be de-rigged at the conclusion of the contract.
- **Hirers must be inducted** before the commencement of any activity at Theatre Works
- **All electrical equipment** and appliances brought into the venue must be tested and tagged to AS/NZS 3760. Theatre Works staff can test and tag items at a cost of \$5 per item.
- **Patch diagrams and LX Plans** are included in the LX appendix at the end of this document.

## **AUDIO**

### **CONTROL**

#### **CONTROL POSITION**

Bio Box dedicated position; no seats pulled

#### **CONSOLE**

Allen & Heath QU16

#### **SECONDARY CONSOLE**

Behringer Xenyx 802

### **SPEAKERS**

## **FOH SPEAKERS**

2x RCF ART425A Active Speakers 400w

## **SUBWOOFER**

None

## **FOLDBACK SPEAKERS**

2x Rare Audio VEX12A 400W active wedges

## **PLAYBACK**

Macbook Pro with full audio Qlab license

CD players available on request

## **CABLE**

### **XLR**

Theatre Works has a good stock of XLR cable of various lengths to accommodate most simple audio setups.

### **MULTICORE**

1x 30m long, 16 sends, 4 returns

## **MICROPHONES & STANDS**

### **VOCAL MICS**

4x Shure SM58

### **INSTRUMENT MICS**

2x Shure sm57

### **MIC STANDS**

3x Tall Boom arm Mic stands

### **SPEAKER STANDS**

2x K&M Speaker Stands

## **AUDIO NOTES**

- **Main FOH Speakers may be moved** as long as they are returned to standard position at conclusion of hire period.
- **Speaker standard position** included in Audio Appendix
- **Please avoid loud noises** after 11pm or before 8am

## **VISION**

### **PROJECTORS**

1x Epson EB-1965 5,000 Lumen Data Projector

1x Epson EB-435W 3,000 Lumen Data Projector

### **MOUNTING**

Theatre Works has 1x Mounting Cradle and can be rigged from any horizontal lighting bar

### **SURFACES**

Theatre Works has a manually retractable projection screen, and a fold up projection screen

### **CABLE**

Theatre Works has a very limited stock of cable and can only accommodate 1x Projector in standard position. Anything else will require extra cabling to be brought in.

### **VISION NOTES**

Use of the projector and projection screens will incur extra costs.

## **BACKSTAGE**

### **DRESSING ROOM**

#### **DESCRIPTION**

Theatre Works has 1 dressing room with a maximum capacity of 15 performers.

**TOILETS**

One, gender neutral

**SHOWER**

One, gender neutral

**MIRRORS**

Yes, with adequate lighting for makeup etc.

**KITCHENETTE**

Yes, with fridge, microwave, kettle, and sink. Tea/Coffee are provided

**WARDROBE / LAUNDRY**

**WASHING MACHINE**

No

**TUMBLE DRYER**

No

**IRON / IRONING BOARD**

No

**CLOTHES RACKS**

Yes, but limited capacity

**PRODUCTION MANAGEMENT**

**INTERNET**

Yes, WiFi details available on request

**PHONE / FAX**

No

**STAGE DOOR**

Access is via rear of theatre, entry via St Leonards Ave

## **PARKING**

Free Parking is available onsite for 5 cars during show calls. Parking is limited to 4 cars during office hours. Entry is via St Leonards Ave.

## **CONTACTS**

### **GENERAL MANAGER**

Dianne Toulson  
[gm@theatreworks.org.au](mailto:gm@theatreworks.org.au)  
03 9534 4879

### **BOX OFFICE MANAGER**

Adam Gardner  
[admin@theatreworks.org.au](mailto:admin@theatreworks.org.au)  
03 9534 3388

### **FINANCIAL ADMINISTRATOR**

Anne Henderson  
[finance@theatreworks.org.au](mailto:finance@theatreworks.org.au)  
03 9534 4879

### **TECHNICAL MANAGER**

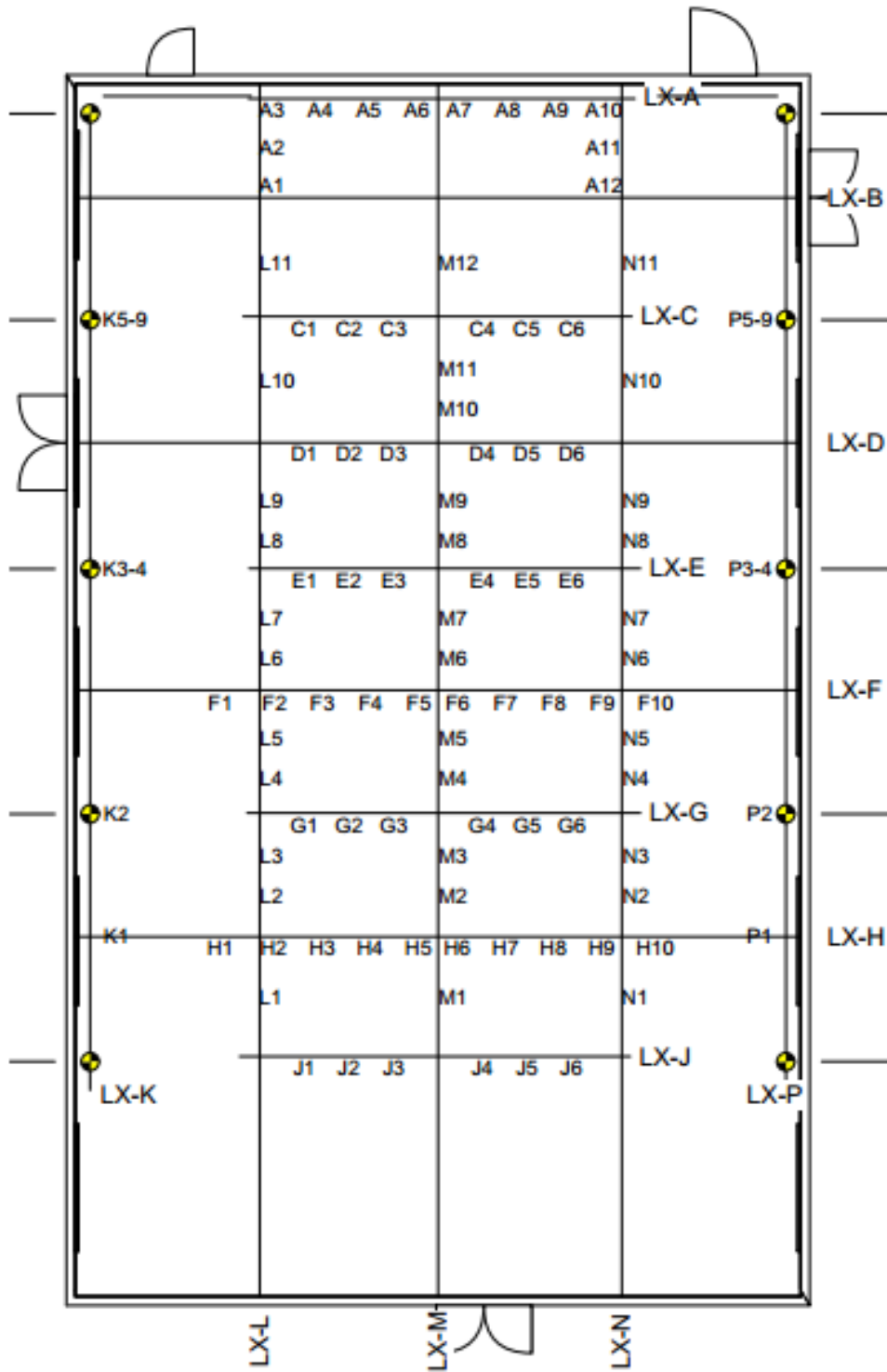
John Collopy  
[tech@theatreworks.org.au](mailto:tech@theatreworks.org.au)  
03 9534 4879

### **PRODUCTION MANAGER**

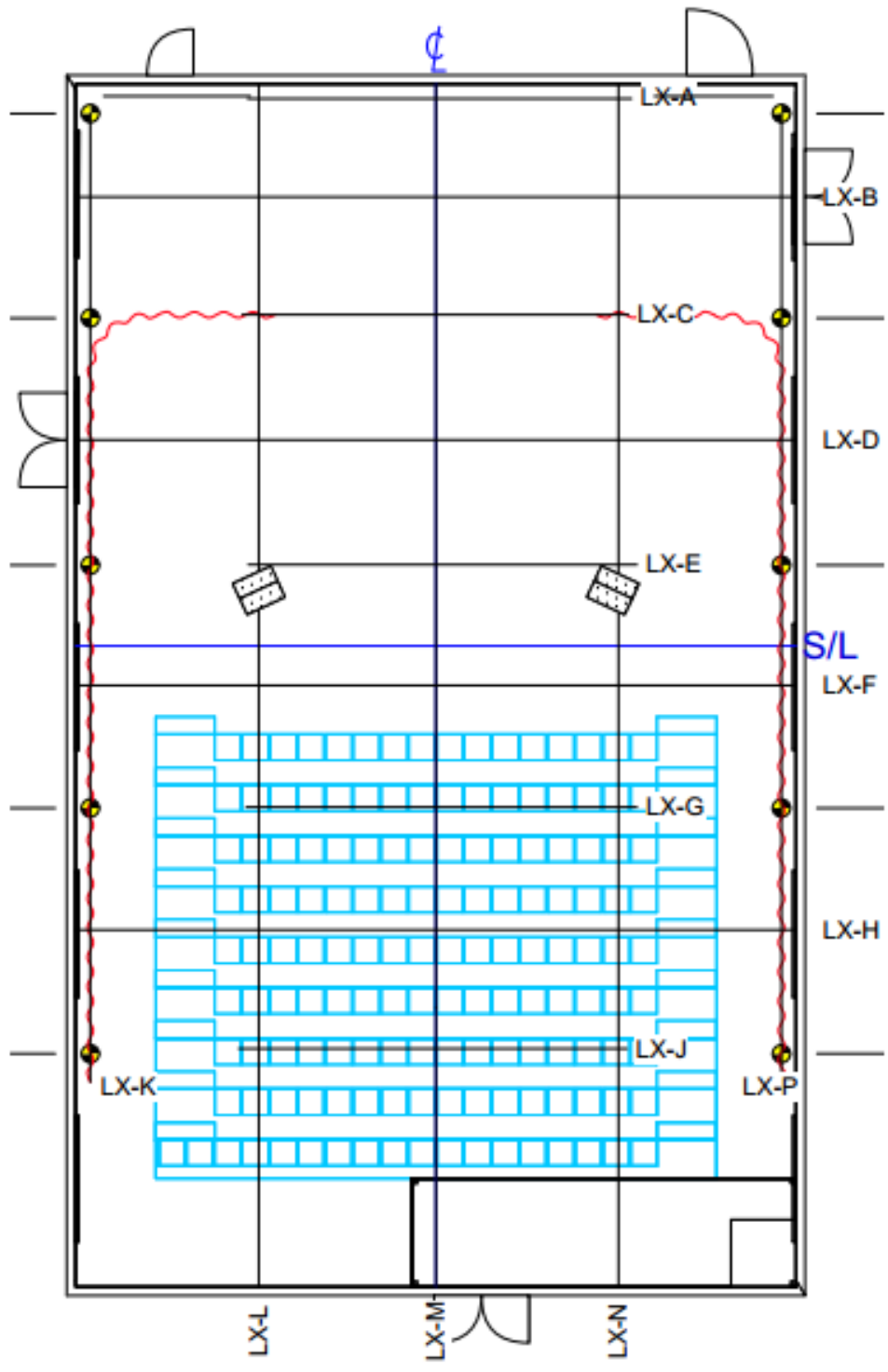
Jacinta Anderson  
[production@theatreworks.org.au](mailto:production@theatreworks.org.au)  
03 9534 4879

# APPENDICES

## LIGHTING PATCH DIAGRAM



# LIGHTING GRID DIAGRAM SHOWING SPEAKER AND DRAPES POSITION



## **VERSION HISTORY**

<b>VERSION</b>	<b>EDITED BY</b>	<b>CHANGES</b>	<b>DATE</b>
1.0	John Collopy	Document Created	05/01/2020